

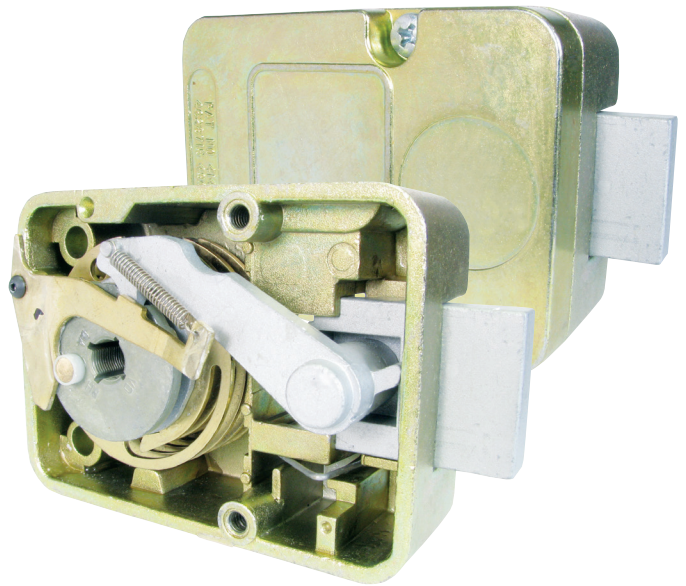


Mechanical Combination Locks

Model 1947 - 4 Wheel Combination Lock

UL Group 1, EN1300C, VdS Class 3

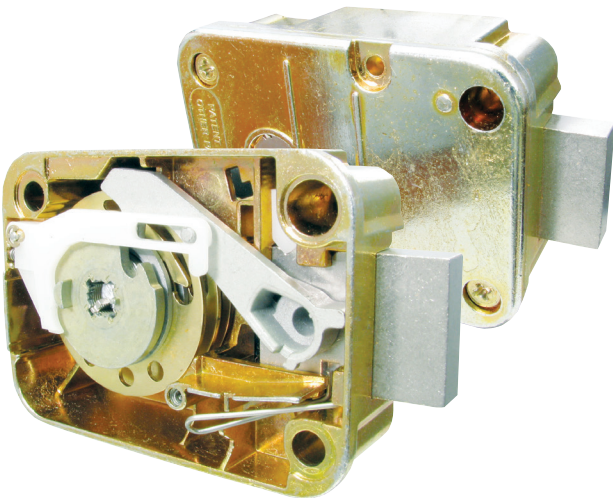
- Die-cast bolt and drop lever
- Standard footprint
- One hundred million possible combinations
- Integrated re-locker, bolt blocking in case of manipulation
- Bolts available in standard 0.5" (12.7mm) and extended 1.50" (38.1mm) lengths
- Drilled and tapped bolts available US (10-32) and Metric (4mm)
- Mounting RH, LH, VU or VD



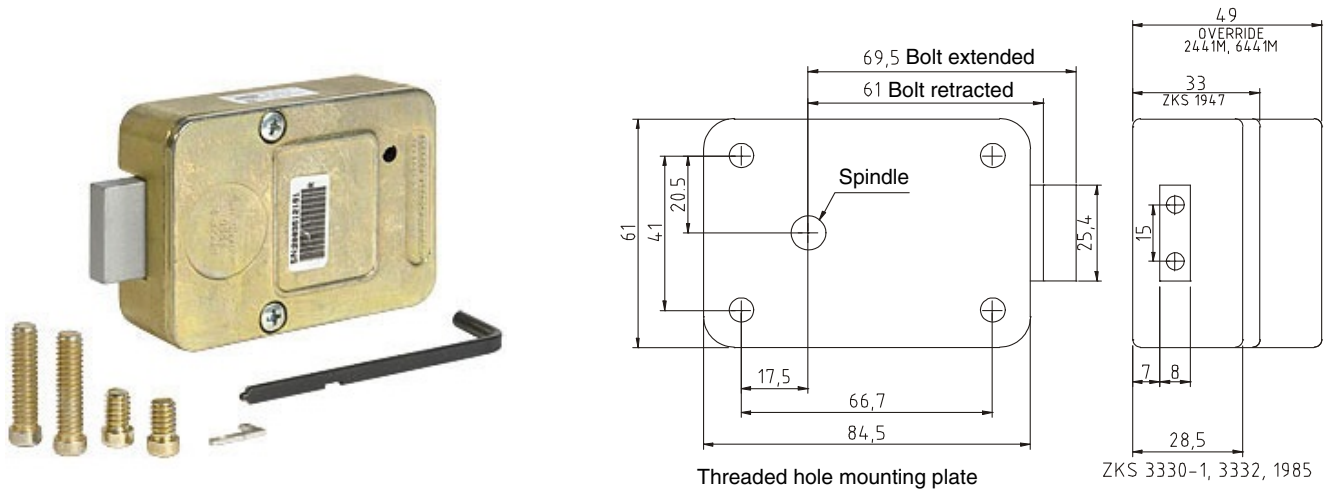
Model 3390 - 3 Wheel Combination Lock

UL Group 2M, EN1300B, VdS Class 2

- Thru-case mounting
- Sintered steel bolt and die-cast drop lever
- Standard footprint
- One million possible combinations
- Integrated re-locker, bolt blocking in case of manipulation
- Bolts available in standard 0.5" (12.7mm) and extended 1.50" (38.1mm) lengths
- Drilled and tapped bolts available US (10-32) and Metric (4mm)
- Mounting RH, LH, VU or VD



Model 3330 - 3 Wheel Combination Lock



(minimum 4 mm) M6 of UNC 1/4" 20

- Changeable 3 wheel combination lock with dead bolt for safes CEN O-II
- Approx. 1 million theoretical variations
- Standard footprint
- Die-cast bolt and drop lever
- Change is initiated at the back of the lock using a change activator
- In combination with bolt works, lock bolt must be free of pressure/tractive forces
- Can be used with various dials and rings

Model 2270 - 4 Wheel Keyed Combination Lock

UL Type 2, CNPP, a2p(E)

- Four brass wheels for long life
- Standard footprint
- Key retained when in open position
- Integrated re-locker, bolt blocking in case of manipulation
- Bolts available in standard 0.5" (12.7mm) and extended 1.50" (38.1mm) lengths
- Drilled and tapped bolts available US (10-32) and Metric (4mm)



2212, 2217, 2218, 2242 Keys - 3", 4", 5", 6"

2226 Key Hole Cover

Models 1730 and 1731

1730 - Restrict-A-Vision Dial and Ring

1731 - Restrict-A-Vision Key Locking Dial and Ring

- For use with all LA GARD Mechanical Combination Locks
- Top reading
- Satin chrome finish and black numbers
- Die cast spindle - 4" (102mm)

Options:

- Steel spindle - 7.50" (191mm)
- Steel spindle - 11.5" (292mm)



Models 1777 and 1779

1777 - Dial and Ring

1779 - Key Locking Dial and Ring

- For use with all LA GARD Mechanical Combination Locks
- Front reading
- Satin chrome finish and black numbers
- Die cast spindle - 4" (102mm)



1777



1779

Options:

- Steel spindle - 7.50" (191mm)
- Steel spindle - 11.5" (292mm)
- Black finish with white numbers

Models 2085 and 2090

2085 - VisionGard, Dial and Ring

2090 - VisionGard, Key Locking Dial and Ring

- For use with all LA GARD mechanical combination locks
- Top reading
- Satin chrome with black numbers
- Die cast spindle - 4" (102mm)

Options:

- Steel spindle - 7.50" (191mm)
- Steel spindle - 11.5" (292mm)
- Brass finish with black numbers



President A 71111 - VDS 1 / UL 437

President 71113 - UL 437

Features

- Lock with dead bolt for safes CEN O-II.
- Approx. 280,000 theoretical variations.
- Standard footprint.
- 8 levers, electrolytic galvanised steel
- Key retained when in open position (71111)
- Die-cast lock case and bolt, throw 12 mm
- Weight approx. 340 g



Options

- Microswitch for bolt monitoring (2-way contact) - Option code: RSK
- Bolt with 2 M4 threads - Option code: RGW2x4
- Key pin projecting 9 mm - Option code: SDV
- Lock case and bolt surface treated - Option code: SRO
- Left hand lock opening counter-clockwise - Option code: SLG

Key Lengths

Key DSD065	User double-bitted key, nickel-plated, die-cast, usable up to 65 mm
Key DSD090-M	User double-bitted key, Mauer bow, nickel-plated, die-cast, usable up to 90 mm
Key DSD090-O	User double-bitted key, oval bow, nickel-plated, die-cast, usable up to 90 mm
Key DSD105	User double-bitted key, nickel-plated, die-cast, usable up to 105 mm
Key DSD120	User double-bitted key, nickel-plated, die-cast, usable up to 120 mm
Key DSD150	User double-bitted key, nickel-plated, die-cast, usable up to 150 mm
Key DSD164	User double-bitted key, nickel-plated, die-cast, usable up to 164 mm
Key DSM070	User double-bitted key, nickel-plated, brass, usable up to 70 mm
Key DSM090	User double-bitted key, nickel-plated, brass, usable up to 90 mm Key blank: 88654 4,42
Key DSM120	User double-bitted key, nickel-plated, brass, usable up to 120 mm
Key DSM145	User double-bitted key, nickel-plated, brass, usable up to 145 mm
Key DSM160	User double-bitted key, nickel-plated, brass, usable up to 160 mm
Key DSS120	User double-bitted key, nickel-plated, high-strength brass, usable up to 120 mm
Key DSS145	User double-bitted key, nickel-plated, high-strength brass, usable up to 145 mm
Key DSS155-230	User double-bitted key, nickel-plated, high-strength brass, usable up to 155-230 mm
Key DSS235-325	User double-bitted key, nickel-plated, high-strength brass, usable up to 80-235 mm
Key DSS330-405	User double-bitted key, nickel-plated, high-strength brass, usable up to 330-405 mm
Key DES120-210	User double-bitted key, detachable mechanism, nickel-plated, high-strength brass, usable up to 120-210 mm
Key DES215-240	User double-bitted key, detachable mechanism, nickel-plated, high-strength brass, usable up to 215-240 mm
Key DES245-360	User double-bitted key, detachable mechanism, nickel-plated, high-strength brass, usable up to 245-360 mm
Key DEG120-210	User double-bitted key, detachable mechanism, nickel-plated, die-cast, usable up to 120-210 mm
Key DEG215-240	User double-bitted key, detachable mechanism, nickel-plated, die-cast, usable up to 215-240 mm
Key DEG245-360	User double-bitted key, detachable mechanism, nickel-plated, die-cast, usable up to 245-360 mm
Key DHS070	Detachable bit part (detachable key), high-strength brass, usable up to 70 mm
Key DHG070	Detachable bit part (detachable key), die-cast, usable up to 70 mm

Praetor

Approvals/Certificates

Without any approvals/certificates

Lock

11 levers, electrolytic galvanised steel

Key retained when in open position

Die-cast lock case and bolt

Bolt with 2 M4 threads, throw 12 mm

Prepared for bolt extension to the front



Admissible mounting positions

Right hand lock, opening clockwise

Options

Microswitch for bolt monitoring (2-way contact), 3 wires, cable length 210 mm

Lock case and bolt surface treated

Bolt extension to the back

Locks keyed alike

Not key retained when in open position, not suitable for access doors

Key marked with permutation number

Left hand lock opening counter-clockwise

Praetor B

Approvals/Certificates

EN 1300 B, ECB-S, VdS class 2, CNPP a2p level B, GOST class C, IMP class B, ICECON class B

Lock

11 levers, steel galvanized

The key cannot be removed when the lock is open

Lock case and bolt die-cast

Bolt with 2 threads M4, stroke 12 mm

Prepared for bolt extension to the front

Weight approx. 530 g



Permitted installation positions

Right hand opening – clockwise

Options

Microswitch for bolt monitoring (2-way contact), 3 wires, cable length 210 mm

Lock case and bolt surface treated

Supplied in works locking mode

Bolt extension to the back

Left hand lock opening counter-clockwise - Option code: SLG

Varos

Features

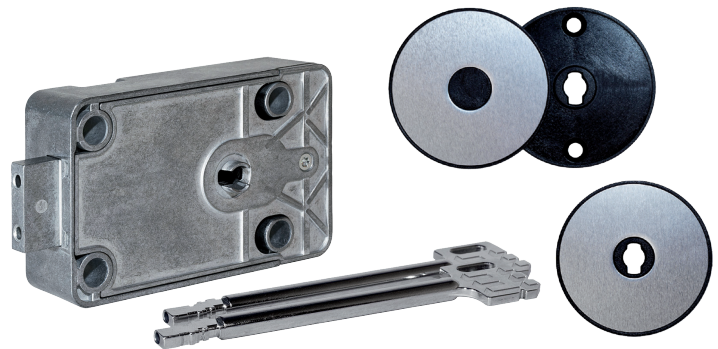
- Changeable lock
- 9 levers
- Key retained when in open position
- Bolt with 2 M4 threads, throw 8.7 mm

Options

- Left-hand lock

Accessories

- Escutcheon
- Escutcheon plate
- Microswitch for bolt monitoring, retrofit
- Screw set for lock mounting, metrical M6 or BSW 1/4
- Leather pouch for detachable bit part



Approvals/Certificates

- EN1300 B, ECB-S, VdS-cl. 2, UL437, optional: DNV

VAROS, the new key lock featuring innovative "mini bit" double-bitted technology. The new patented lock mechanism allows for easy and unique method to change to a new set of keys, without requiring additional tools.

Moreover, the new "mini bit" key geometry facilitates easy mounting in safes that have previously been prepared for mechanical or electronic combination locks. So no additional drilling is required.

VAROS, changeable lock with new and proven functionality benefits

- User-friendly and very robust
- Changeable from the front without using tools
- Keys can remain secret until they are used by the end user
- Standard foot print
- Compatible with mechanical and electronic locks
- Microswitch for bolt monitoring retrofit
- Made in Germany

Key material	Length	Key bow
User key, nickel-plated		
Die-cast	90 / 120 / 150 / 164 mm	Mauer
High-strength brass	120 / 80 - 360 mm	Mauer / Oval, Mauer upon request
Steel, with detachable mechanism	120 - 350 mm	Oval, Mauer upon request
Works key, nickel-plated		
High-strength brass	120 / 80 - 360 mm	Mauer / Oval, Mauer upon request

TSN (TITAN) PTE LTD
1 Scotts Road, #24-10
Shaw Center
Singapore 228208
Fax: +65 6323 1839
Phone: +65 9117 1383
Email: support@tsntitan.com